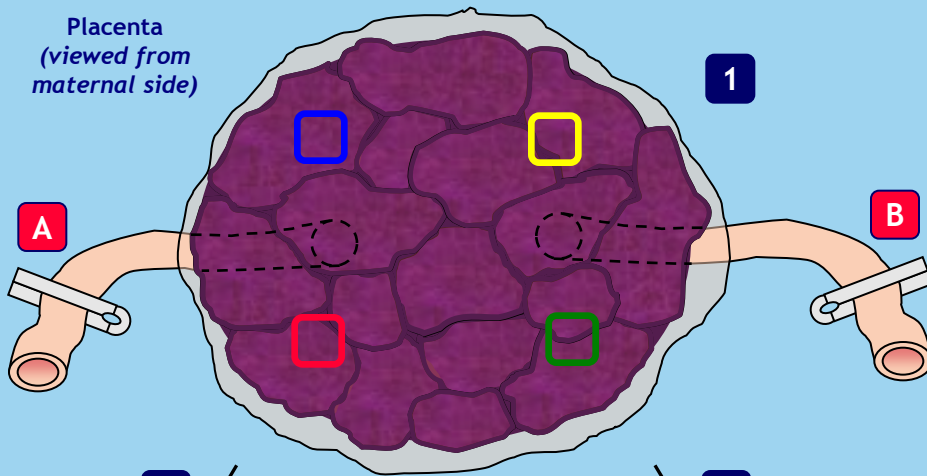


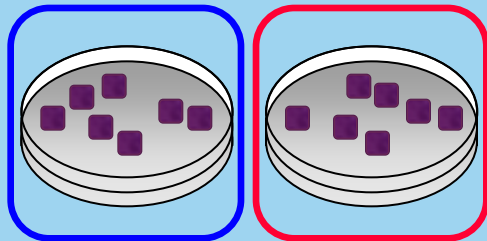
Monochorionic twins - Placenta sampling overview

Placenta
(viewed from
maternal side)

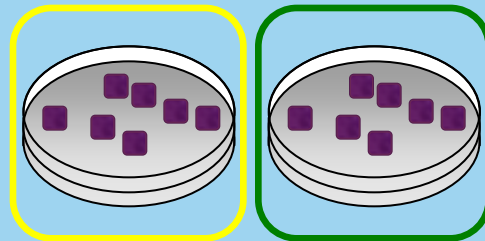


2A

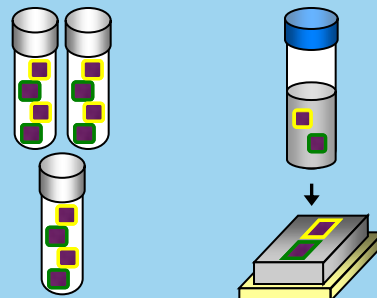
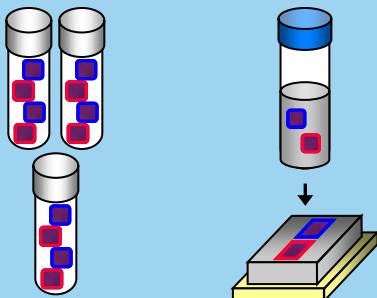
2B



3



4



1. Placental weight is recorded at the start of processing and the placenta is positioned to allow clear identification of tissue regions corresponding to each twin.

2. For each twin, two tissue cores (1.0x1.0cm, full thickness excluding the chorionic plate) are taken from two representative areas of the placenta, at least 1.5cm from the edge.

3. Each core is rinsed in PBS, blotted briefly to remove excess PBS and cut into multiple pieces on blue absorbent pads.

4. Tissue samples from each representative area are transferred to cryovials (3 per twin) or paraformaldehyde (1 per twin).

NOTE: Dichorionic twin placentas are to be sampled using the protocol for singleton placentas, treating each respective twin as a singleton