

The Research Centre for Women's and Infants' Health (RCWIH) BioBank

*A program of the Lunenfeld-Tanenbaum
Research Institute and the Mount Sinai
Hospital/University Health Network
Department of Obstetrics & Gynaecology*



**Lunenfeld-Tanenbaum
Research Institute**

MOUNT SINAI HOSPITAL 
Joseph and Wolf Lebovic Health Complex

Research Centre for Women's and Infants' Health BioBank
<http://biobank.lunenfeld.ca>

The following presentation is intended to accompany the Research Centre for Women's and Infants' Health (RCWIH) BioBank Standard Operating Procedures for the Collection of Perinatal Specimens for Research (available online at <http://biobank.lunenfeld.ca/?page=Specimen%20Archive>).

**Lunenfeld-Tanenbaum
Research Institute**

MOUNT SINAI HOSPITAL 
Joseph and Wolf Lebovic Health Complex

Research Centre for Women's and Infants' Health BioBank
biobank.lunenfeld.ca

**Collection of umbilical cord blood using
standard collection tubes or vacutainers.**

**Lunenfeld-Tanenbaum
Research Institute**

MOUNT SINAI HOSPITAL 
Joseph and Wolf Lebovic Health Complex

Research Centre for Women's and Infants' Health BioBank
biobank.lunenfeld.ca

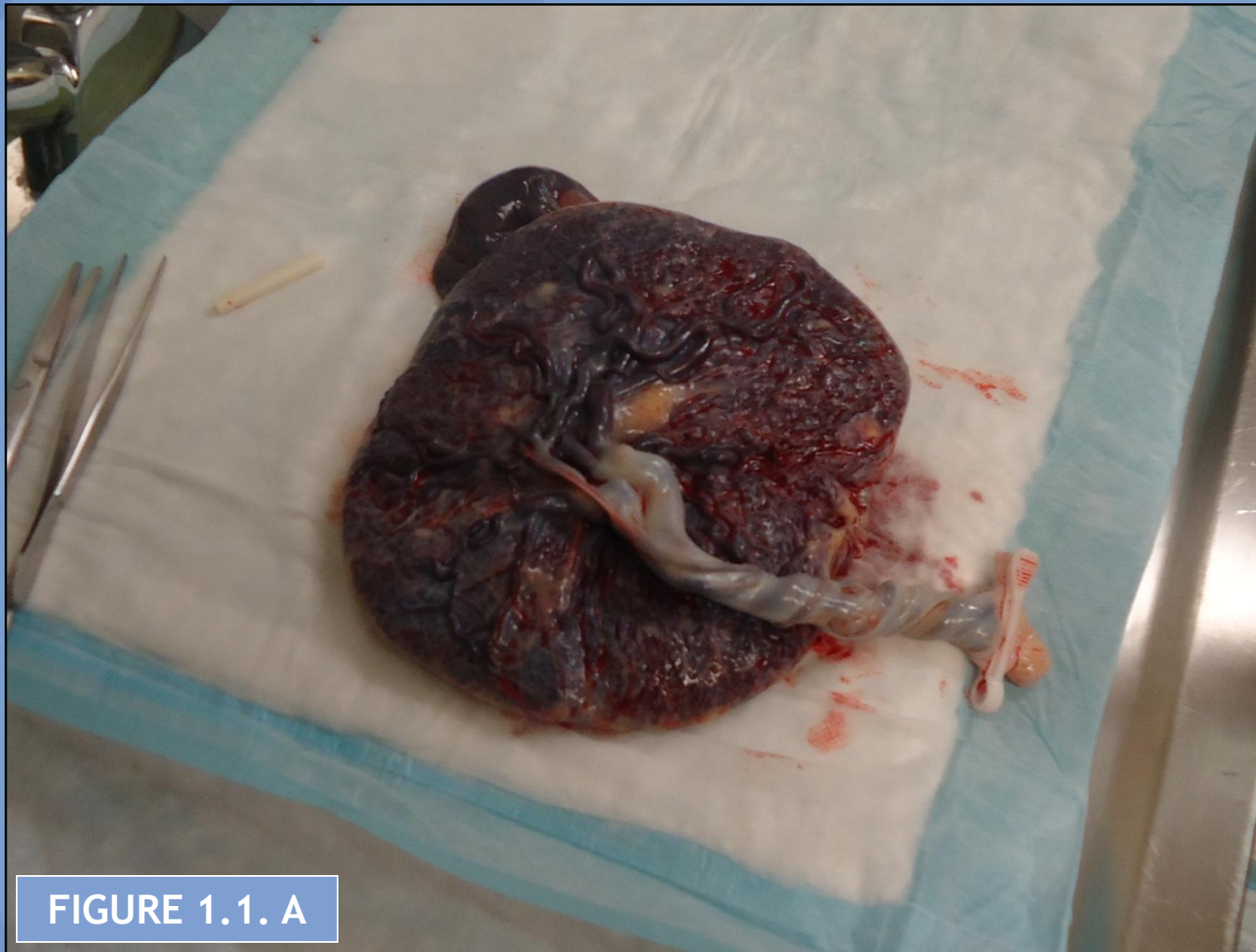


FIGURE 1.1. A

**Lunenfeld-Tanenbaum
Research Institute**

MOUNT SINAI HOSPITAL 
Joseph and Wolf Lebovic Health Complex

Research Centre for Women's and Infants' Health BioBank
biobank.lunenfeld.ca

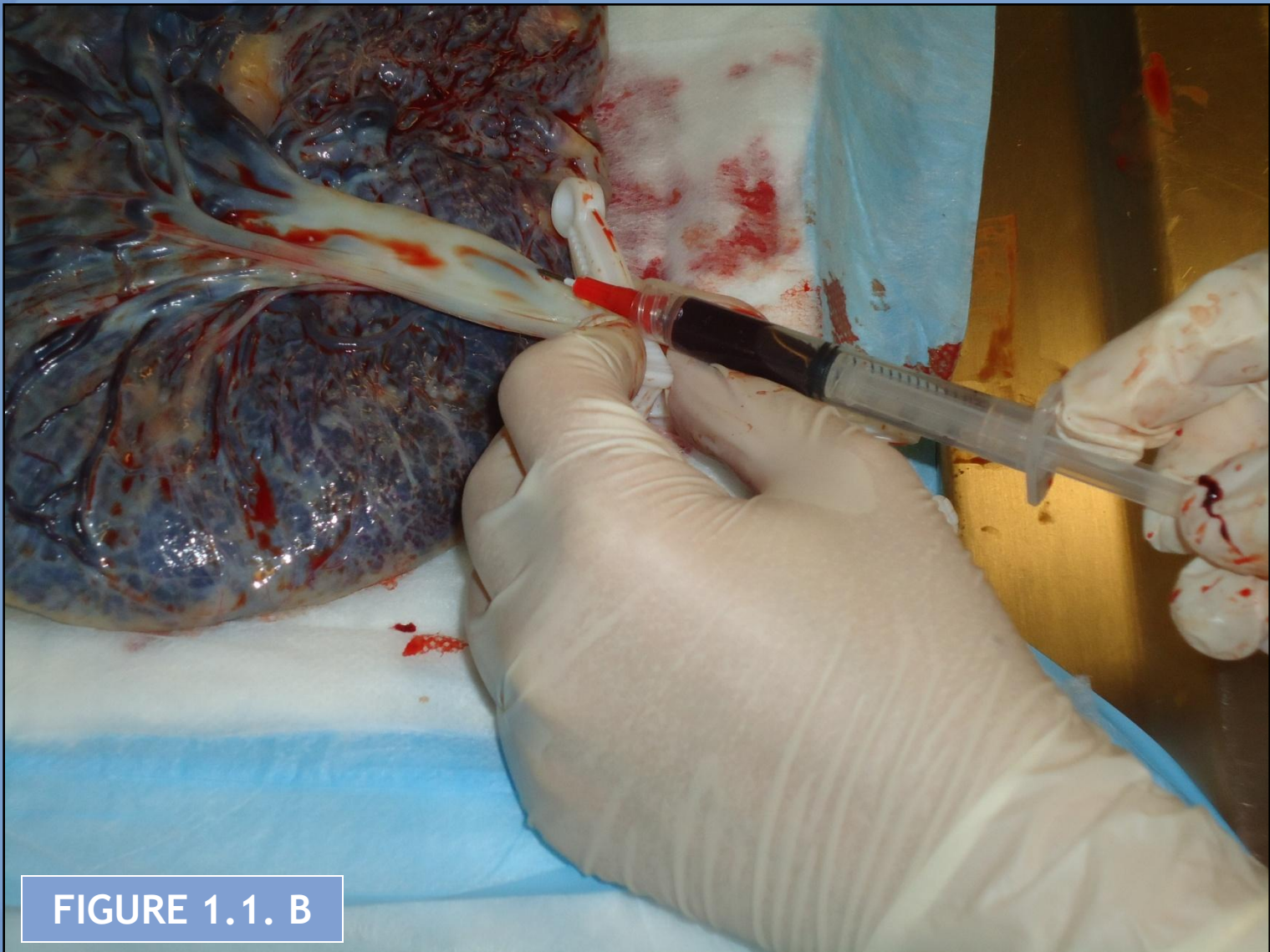


FIGURE 1.1. B

**Lunenfeld-Tanenbaum
Research Institute**

MOUNT SINAI HOSPITAL 
Joseph and Wolf Lebovic Health Complex

Research Centre for Women's and Infants' Health BioBank
biobank.lunenfeld.ca



FIGURE 1.1. C

**Lunenfeld-Tanenbaum
Research Institute**

MOUNT SINAI HOSPITAL 
Joseph and Wolf Lebovic Health Complex

Research Centre for Women's and Infants' Health BioBank
biobank.lunenfeld.ca

Collection of umbilical cord blood using closed-system collection bags.

**Lunenfeld-Tanenbaum
Research Institute**

MOUNT SINAI HOSPITAL 
Joseph and Wolf Lebovic Health Complex

Research Centre for Women's and Infants' Health BioBank
biobank.lunenfeld.ca



FIGURE 1.2. A

**Lunenfeld-Tanenbaum
Research Institute**

MOUNT SINAI HOSPITAL 
Joseph and Wolf Lebovic Health Complex

Research Centre for Women's and Infants' Health BioBank
biobank.lunenfeld.ca



FIGURE 1.2. B

**Lunenfeld-Tanenbaum
Research Institute**

MOUNT SINAI HOSPITAL 
Joseph and Wolf Lebovic Health Complex

Research Centre for Women's and Infants' Health BioBank
biobank.lunenfeld.ca



FIGURE 1.2. C

**Lunenfeld-Tanenbaum
Research Institute**

MOUNT SINAI HOSPITAL 
Joseph and Wolf Lebovic Health Complex

Research Centre for Women's and Infants' Health BioBank
biobank.lunenfeld.ca



FIGURE 1.2. D

**Lunenfeld-Tanenbaum
Research Institute**

MOUNT SINAI HOSPITAL 
Joseph and Wolf Lebovic Health Complex

Research Centre for Women's and Infants' Health BioBank
biobank.lunenfeld.ca



**Lunenfeld-Tanenbaum
Research Institute**

MOUNT SINAI HOSPITAL 
Joseph and Wolf Lebovic Health Complex

Research Centre for Women's and Infants' Health BioBank
biobank.lunenfeld.ca



FIGURE 1.2. G

Lunenfeld-Tanenbaum
Research Institute

MOUNT SINAI HOSPITAL
Joseph and Wolf Lebovic Health Complex

Research Centre for Women's and Infants' Health BioBank
biobank.lunenfeld.ca

Preparation of the placenta for core sampling.

**Lunenfeld-Tanenbaum
Research Institute**

MOUNT SINAI HOSPITAL 
Joseph and Wolf Lebovic Health Complex

Research Centre for Women's and Infants' Health BioBank
biobank.lunenfeld.ca



FIGURE 1.4. A

**Lunenfeld-Tanenbaum
Research Institute**

MOUNT SINAI HOSPITAL 
Joseph and Wolf Lebovic Health Complex

Research Centre for Women's and Infants' Health BioBank
biobank.lunenfeld.ca

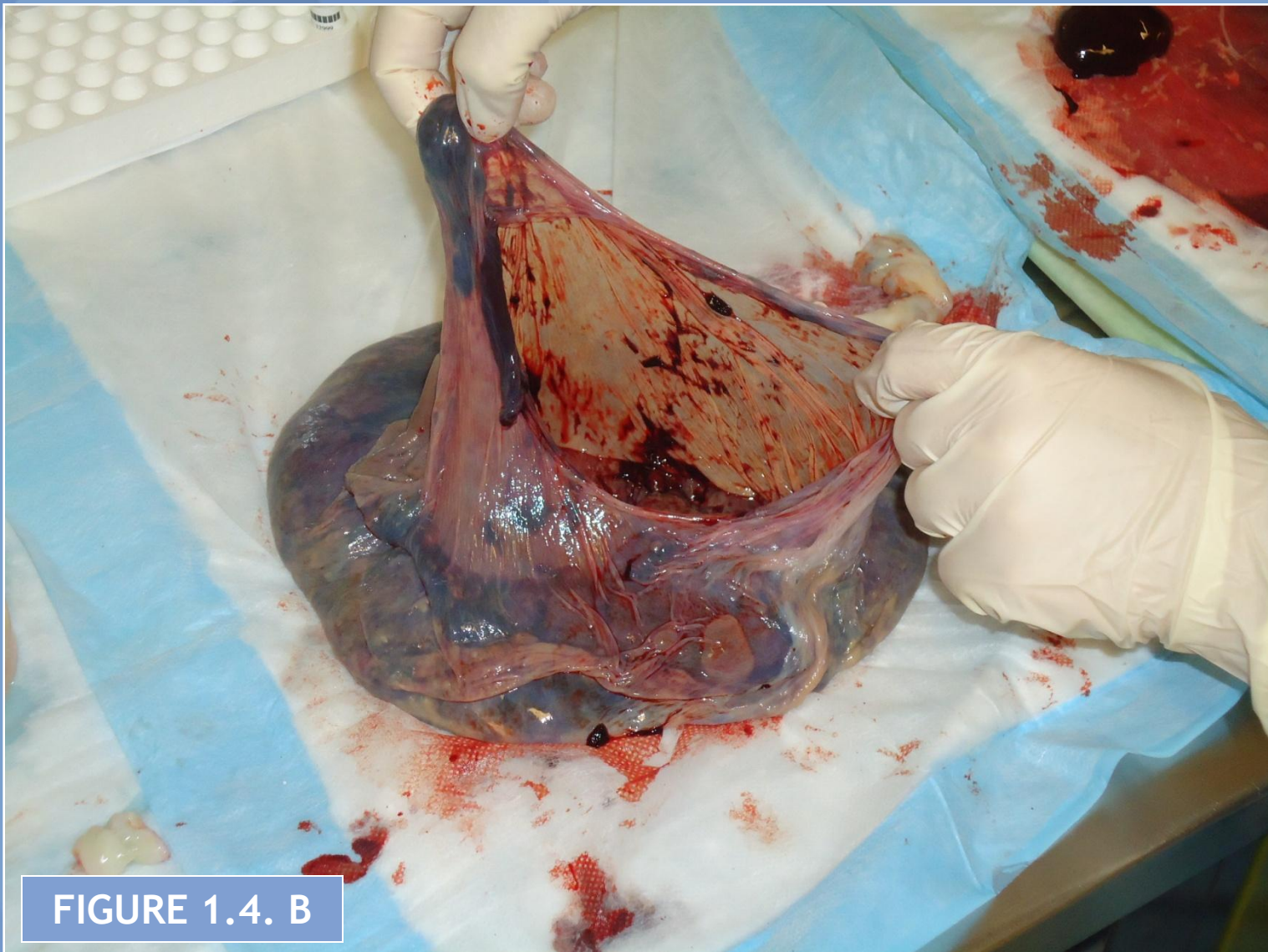


FIGURE 1.4. B

**Lunenfeld-Tanenbaum
Research Institute**

MOUNT SINAI HOSPITAL 
Joseph and Wolf Lebovic Health Complex

Research Centre for Women's and Infants' Health BioBank
biobank.lunenfeld.ca



FIGURE 1.4. C

**Lunenfeld-Tanenbaum
Research Institute**

MOUNT SINAI HOSPITAL 
Joseph and Wolf Lebovic Health Complex

Research Centre for Women's and Infants' Health BioBank
biobank.lunenfeld.ca



FIGURE 1.4. D

**Lunenfeld-Tanenbaum
Research Institute**

MOUNT SINAI HOSPITAL 
Joseph and Wolf Lebovic Health Complex

Research Centre for Women's and Infants' Health BioBank
biobank.lunenfeld.ca

Extraction and processing of placental tissue cores.

**Lunenfeld-Tanenbaum
Research Institute**

MOUNT SINAI HOSPITAL 
Joseph and Wolf Lebovic Health Complex

Research Centre for Women's and Infants' Health BioBank
biobank.lunenfeld.ca



FIGURE 1.5. A

**Lunenfeld-Tanenbaum
Research Institute**

MOUNT SINAI HOSPITAL
Joseph and Wolf Lebovic Health Complex

Research Centre for Women's and Infants' Health BioBank
biobank.lunenfeld.ca



FIGURE 1.5. B

**Lunenfeld-Tanenbaum
Research Institute**

MOUNT SINAI HOSPITAL
Joseph and Wolf Lebovic Health Complex

Research Centre for Women's and Infants' Health BioBank
biobank.lunenfeld.ca



FIGURE 1.5. C

**Lunenfeld-Tanenbaum
Research Institute**

MOUNT SINAI HOSPITAL
Joseph and Wolf Lebovic Health Complex

Research Centre for Women's and Infants' Health BioBank
biobank.lunenfeld.ca



FIGURE 1.5. D

**Lunenfeld-Tanenbaum
Research Institute**

MOUNT SINAI HOSPITAL 
Joseph and Wolf Lebovic Health Complex

Research Centre for Women's and Infants' Health BioBank
biobank.lunenfeld.ca

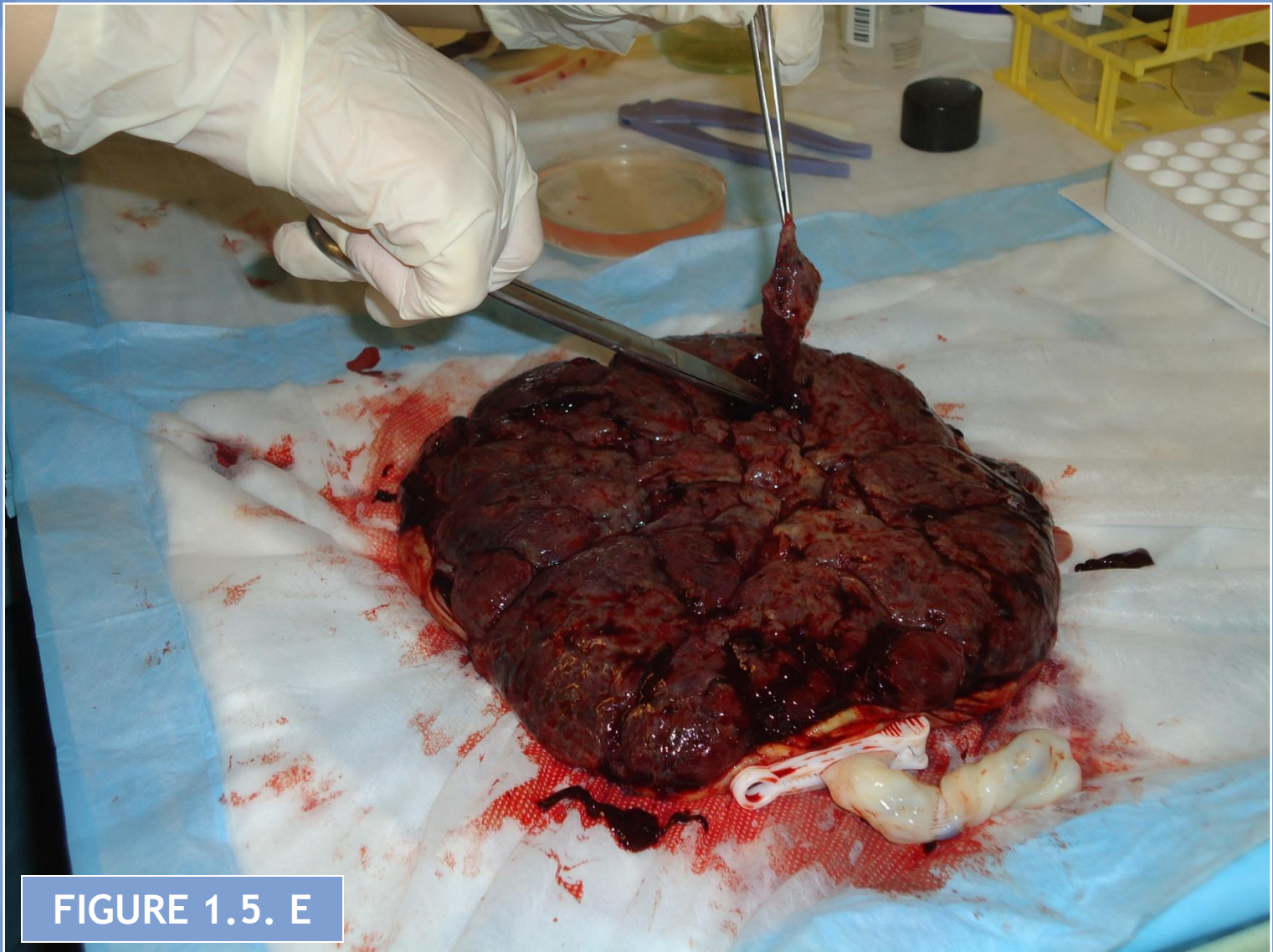


FIGURE 1.5. E

**Lunenfeld-Tanenbaum
Research Institute**

MOUNT SINAI HOSPITAL 
Joseph and Wolf Lebovic Health Complex

Research Centre for Women's and Infants' Health BioBank
biobank.lunenfeld.ca



FIGURE 1.5. F

**Lunenfeld-Tanenbaum
Research Institute**

MOUNT SINAI HOSPITAL
Joseph and Wolf Lebovic Health Complex

Research Centre for Women's and Infants' Health BioBank
biobank.lunenfeld.ca



**Lunenfeld-Tanenbaum
Research Institute**

MOUNT SINAI HOSPITAL 
Joseph and Wolf Lebovic Health Complex

Research Centre for Women's and Infants' Health BioBank
biobank.lunenfeld.ca

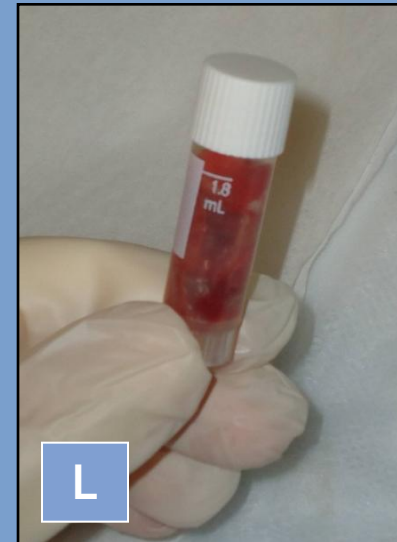
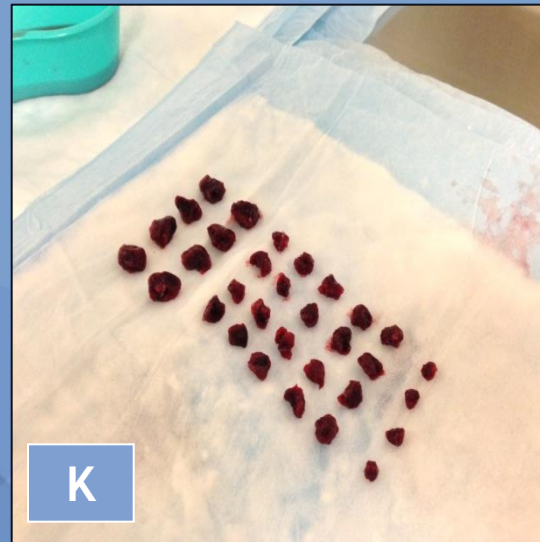
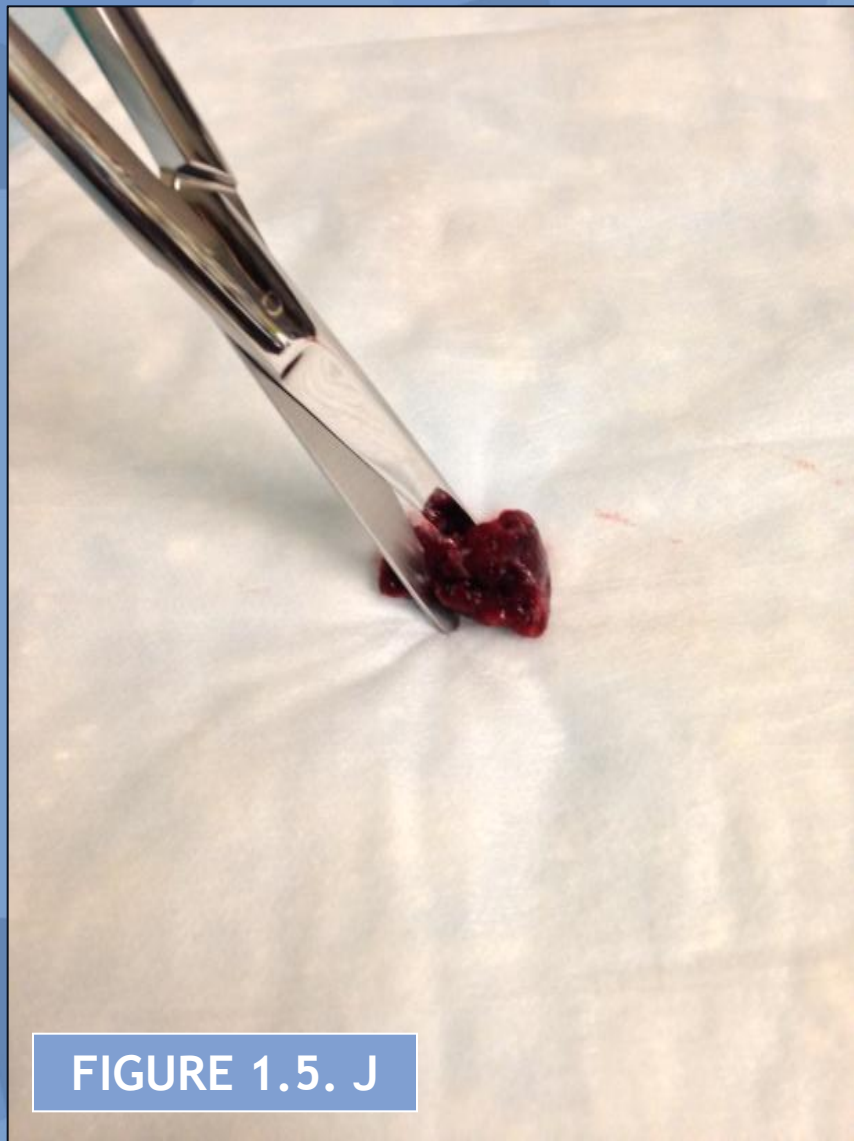


FIGURE 1.5. I

**Lunenfeld-Tanenbaum
Research Institute**

MOUNT SINAI HOSPITAL 
Joseph and Wolf Lebovic Health Complex

Research Centre for Women's and Infants' Health BioBank
biobank.lunenfeld.ca



Lunenfeld-Tanenbaum
Research Institute

MOUNT SINAI HOSPITAL
Joseph and Wolf Lebovic Health Complex

Research Centre for Women's and Infants' Health BioBank
biobank.lunenfeld.ca

Processing of umbilical cord tissue.

**Lunenfeld-Tanenbaum
Research Institute**

MOUNT SINAI HOSPITAL 
Joseph and Wolf Lebovic Health Complex

Research Centre for Women's and Infants' Health BioBank
biobank.lunenfeld.ca

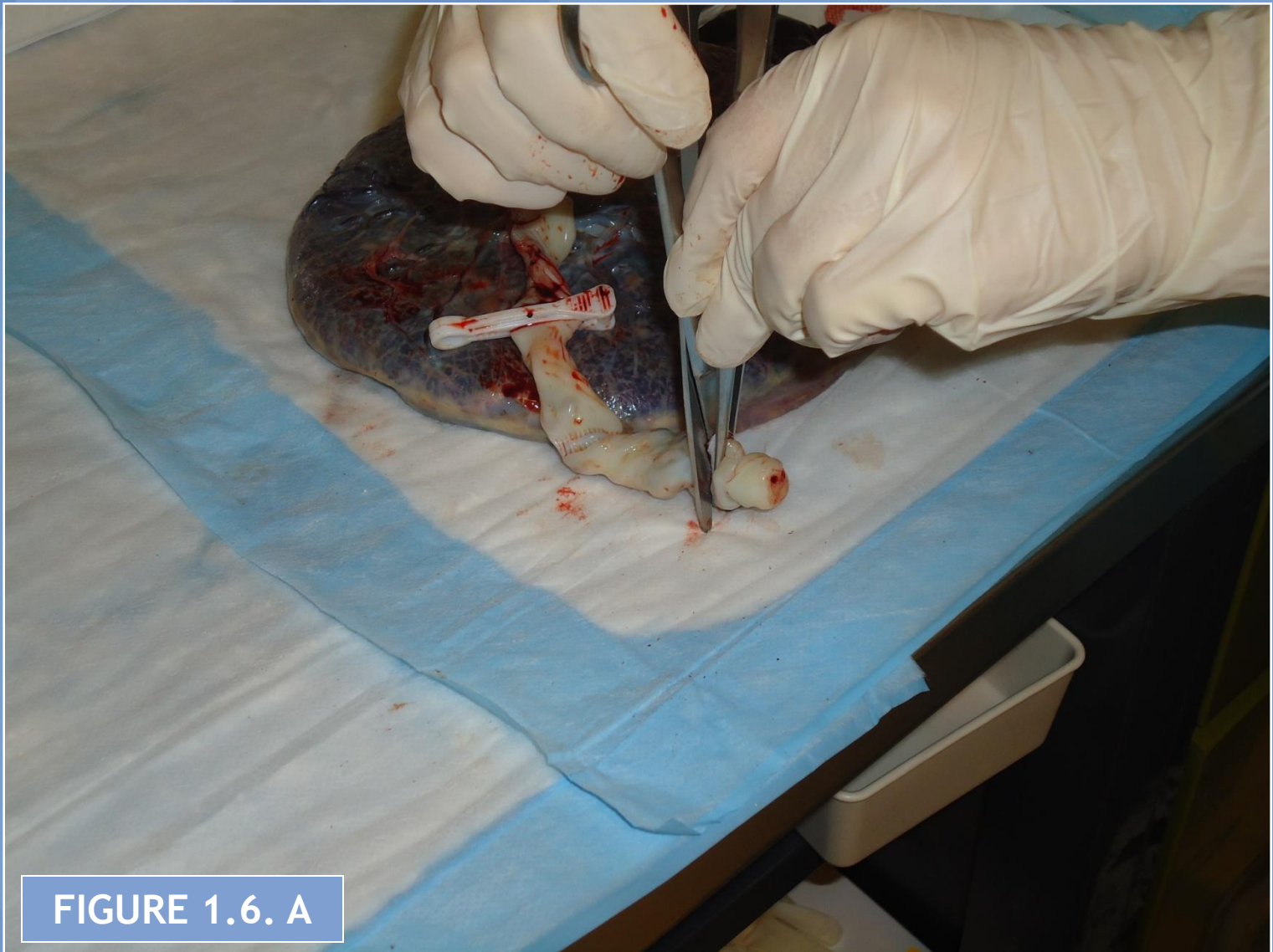


FIGURE 1.6. A

**Lunenfeld-Tanenbaum
Research Institute**

MOUNT SINAI HOSPITAL 
Joseph and Wolf Lebovic Health Complex

Research Centre for Women's and Infants' Health BioBank
biobank.lunenfeld.ca



FIGURE 1.6. B

**Lunenfeld-Tanenbaum
Research Institute**

MOUNT SINAI HOSPITAL 
Joseph and Wolf Lebovic Health Complex

Research Centre for Women's and Infants' Health BioBank
biobank.lunenfeld.ca

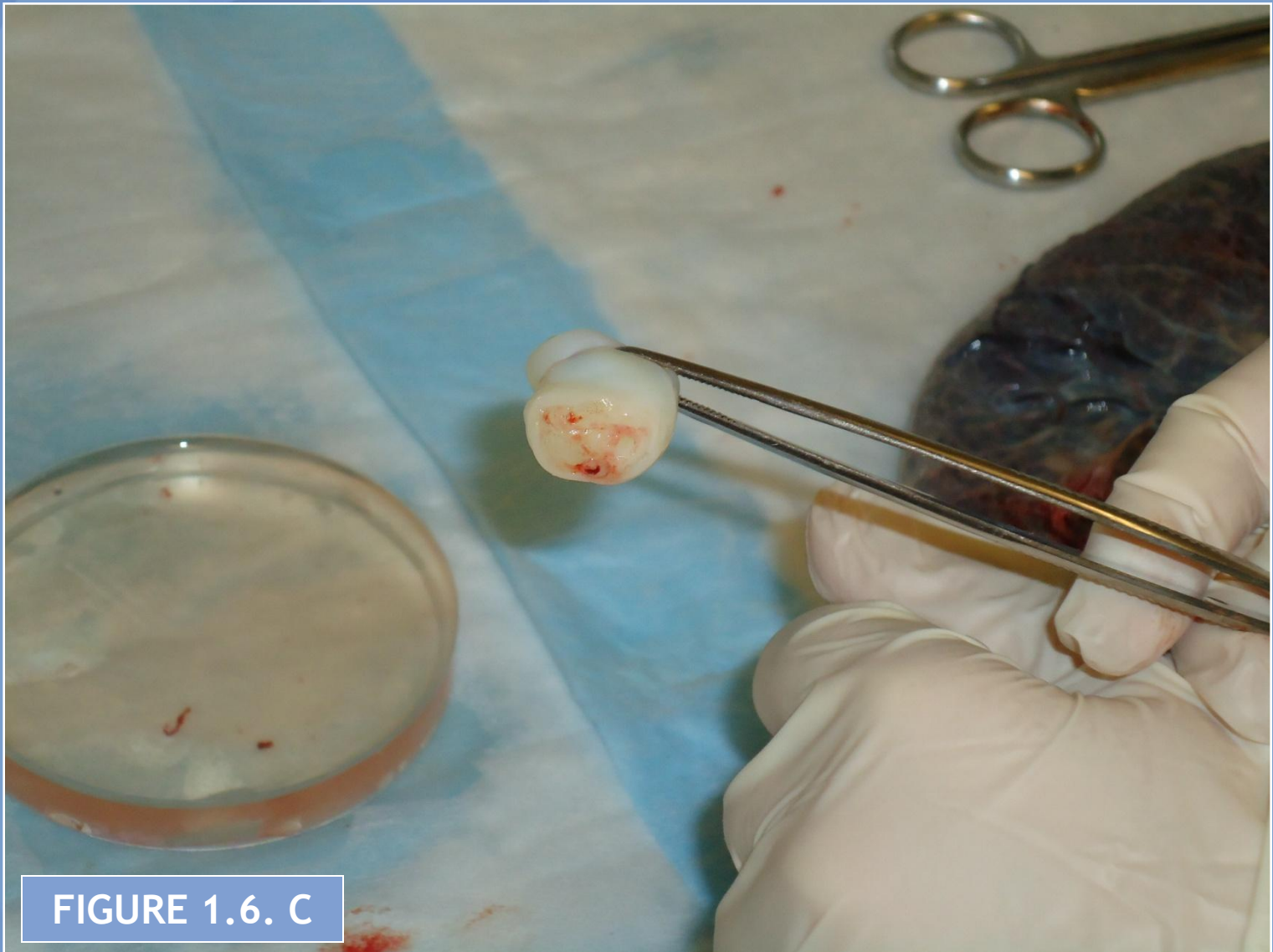


FIGURE 1.6. C

**Lunenfeld-Tanenbaum
Research Institute**

MOUNT SINAI HOSPITAL 
Joseph and Wolf Lebovic Health Complex

Research Centre for Women's and Infants' Health BioBank
biobank.lunenfeld.ca

Research Centre for Women's and Infants' Health BioBank

For additional information

<http://biobank.lunenfeld.ca>

Contact RCWIH BioBank Management:

rcwih.biobank@lunenfeld.ca

(416) 586-4800 extension 6697

**Lunenfeld-Tanenbaum
Research Institute**

MOUNT SINAI HOSPITAL 
Joseph and Wolf Lebovic Health Complex

Research Centre for Women's and Infants' Health BioBank
biobank.lunenfeld.ca